

Carmel
Corporate
Plaza

for lease

15015 Avenue of Science
San Diego, CA



2-story | Corporate Headquarters | Class A Office Building
Carmel Mountain Ranch



Jones Lang LaSalle Brokerage, Inc. RE license #01856260

Carmel Corporate Plaza

15015 Avenue of Science | San Diego, CA 92128
Corporate Headquarters - Class A Office Building

13,798 rsf available now

9,590 rsf available now

Building features

- High visibility corner location with monument signage opportunity on corner of Avenue of Science and Rancho Carmel Drive
- Total building size is approximately 84,789 s.f.
- Mix of prime offices and large bullpen areas for cubicles
- Unusually large amount of glass line providing spectacular natural light
- Entire building features 11' interior ceiling height
- Parking ratio: 3.1/1,000 s.f. leased and abundant on street parking available

Location

- Direct I-15 freeway access via Camino Del Norte and Carmel Mountain Road
- High profile corner location directly across the street from over 1 million s.f. of retail amenities
- Ideal location in San Diego County's premier corporate market with neighbors that include: BAE, Hewlett Packard, Northrop Grumman, Cymer, General Atomics and many others

Exclusively leased by:



Jay Alexander
Managing Director
+1 858 410 1188
jay.alexander@am.jll.com
RE license #01019910

Tim Olson
Managing Director
+1 858 410 1253
t.olson@am.jll.com
RE license #01364117

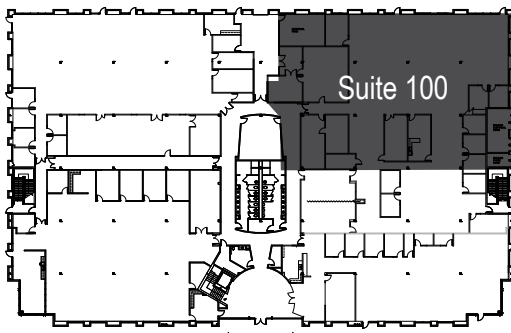
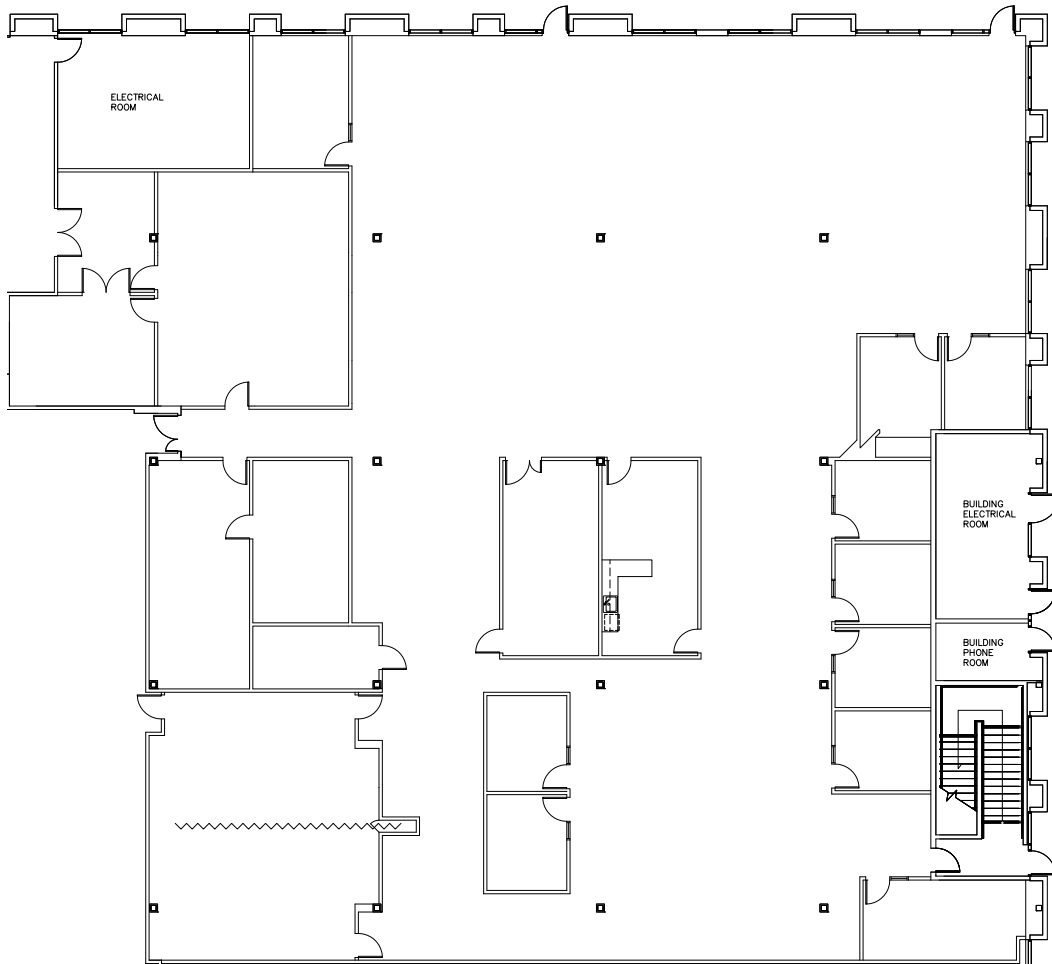


Carmel Corporate Plaza

15015 Avenue of Science | San Diego, CA 92128
Corporate Headquarters - Class A Office Building

13,798 rsf available

Suite 100 | As-is Plan



Exclusively leased by:

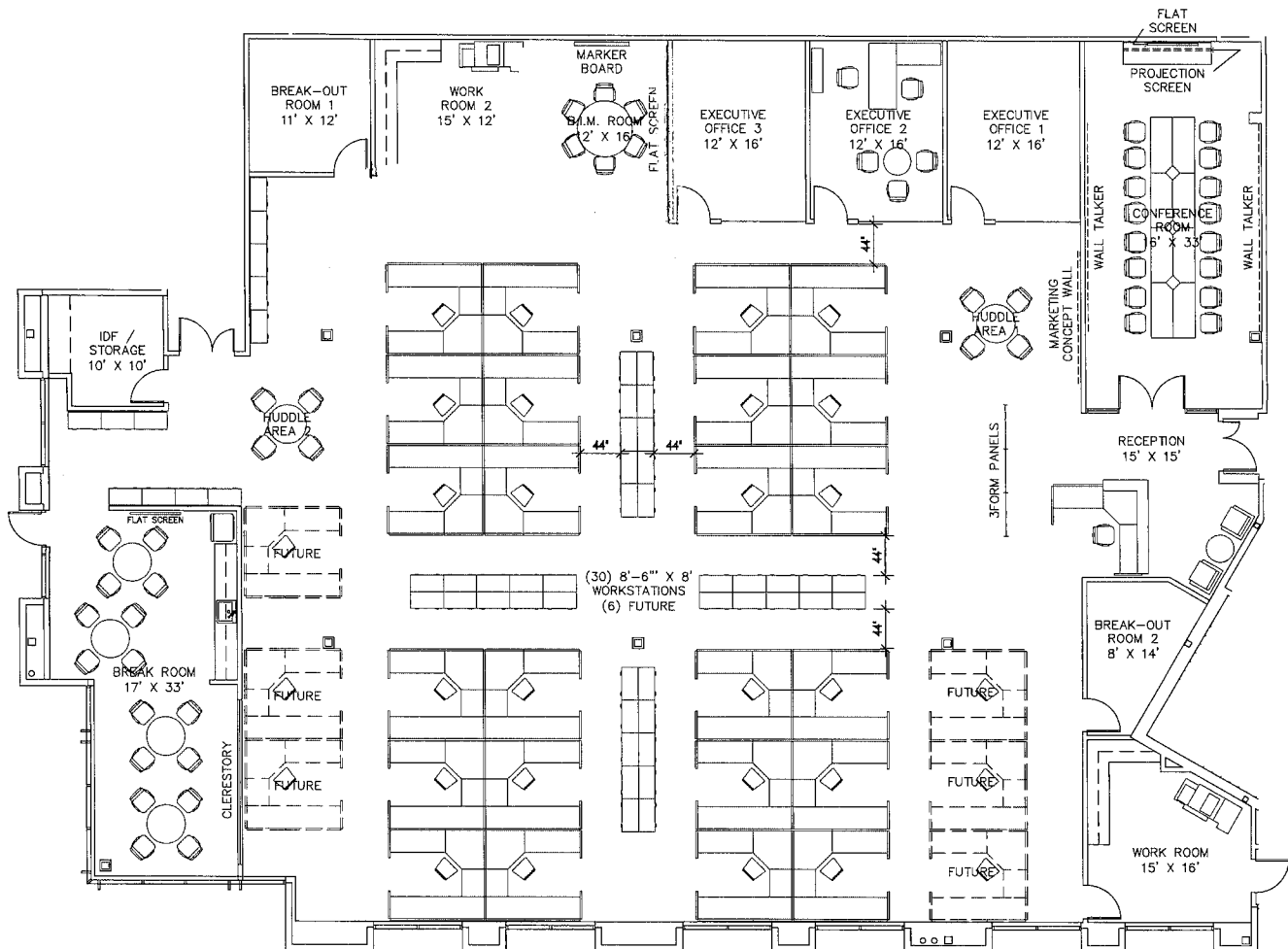


Jay Alexander
Managing Director
+1 858 410 1188
jay.alexander@am.jll.com
RE license #01019910

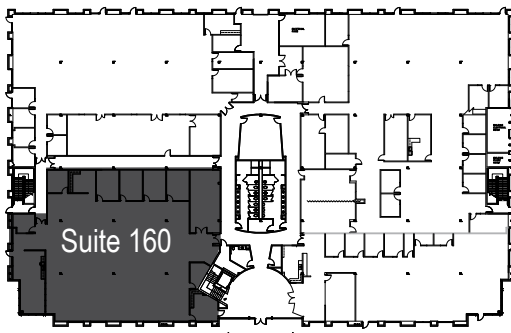
Tim Olson
Managing Director
+1 858 410 1253
t.olson@am.jll.com
RE license #01364117

9,590 SF available

Suite 160 | As-is Plan*



* furniture not included



Exclusively leased by:



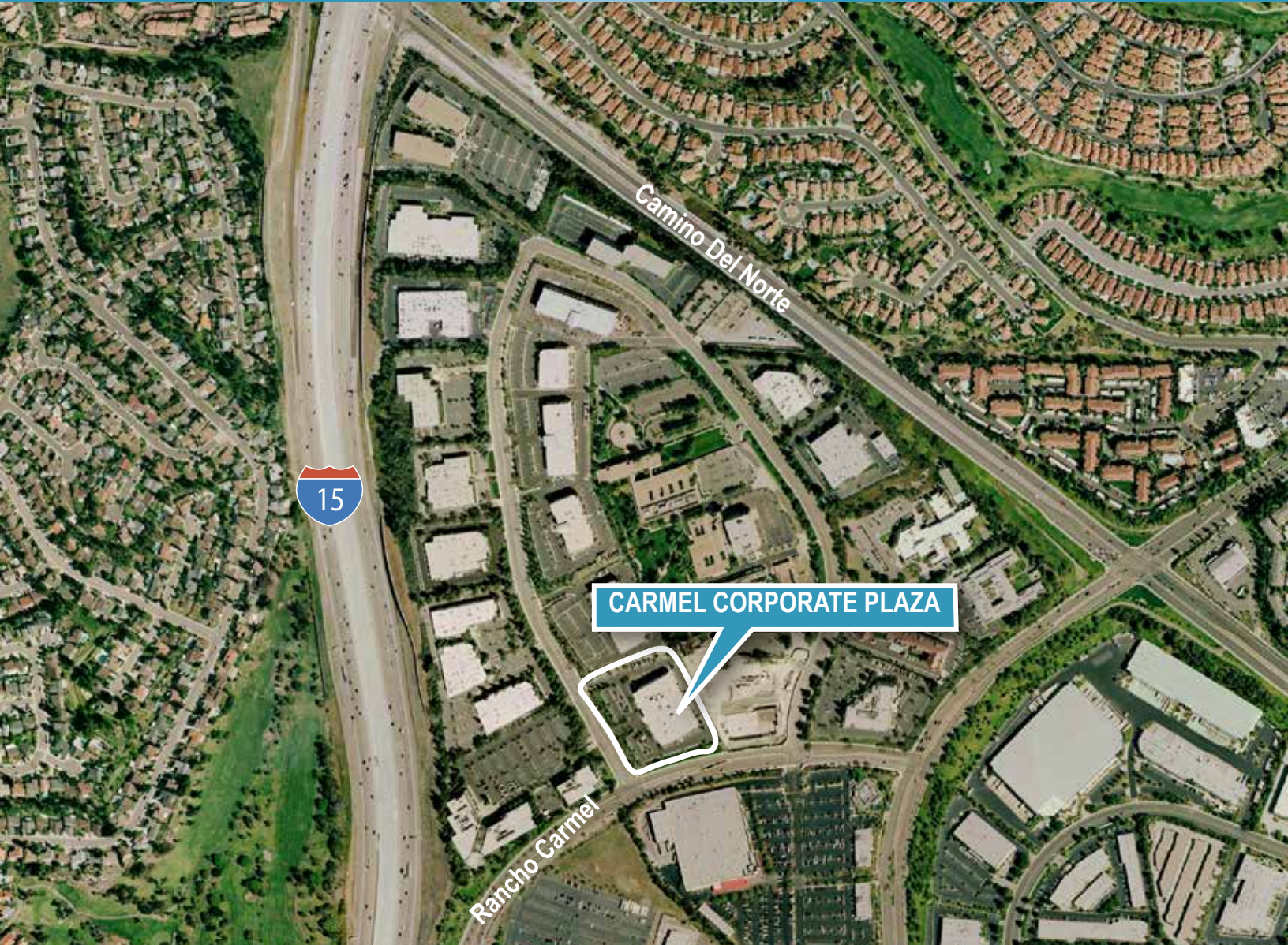
Jay Alexander
Managing Director
+1 858 410 1188
jay.alexander@am.jll.com
RE license #01019910

Tim Olson
Managing Director
+1 858 410 1253
t.olson@am.jll.com
RE license #01364117

Carmel Corporate Plaza

for lease

15015 Avenue of Science
San Diego, CA



CARMEL CORPORATE PLAZA

Although information has been obtained from sources deemed reliable, neither Owner nor JLL makes any guarantees, warranties or representations, express or implied, as to the completeness or accuracy as to the information contained herein. Any projections, opinions, assumptions or estimates used are for example only. There may be differences between projected and actual results, and those differences may be material. The Property may be withdrawn without notice. Neither Owner nor JLL accepts any liability for any loss or damage suffered by any party resulting from reliance on this information. If the recipient of this information has signed a confidentiality agreement regarding this matter, this information is subject to the terms of that agreement. ©2018.Jones Lang LaSalle IP, Inc. All rights reserved.



Jay Alexander
Managing Director
+1 858 410 1188
jay.alexander@am.jll.com
RE license #01019910

Tim Olson
Managing Director
+1 858 410 1253
t.olson@am.jll.com
RE license #01364117

Professionally owned and managed by

